

Instruction Sheet

Follow these instructions to install heater tapes for use with solid shortening on the 1814 fryer.

Subject: 826xxxx 1814 Solid Shortening Heater Kit Installation Instructions

Models affected: 1814 Fryers

1. Remove fryer from under the hood to gain access to rear of fryer.
2. Remove power from the fryer.
3. Remove the filter pan (see Figure 1).
4. Remove the filter pan lid (see Figure 2).
5. Remove the back of the fryer to gain access to the rear of the fryer (see Figure 3).
6. Using a 36-inch heater tape, lay the end opposite the wires where the flexline meets at the manifold. Secure using aluminum tape. Route along the flex line to the pump (see Figure 4)
7. Route down underneath the pump (see Figure 5).
8. Wrap the heater tape around the pump twice (see Figure 6). Do **NOT** overlap heater tape over itself. It will greatly shorten its life. Secure using aluminum tape.
9. Ensure the purple and red wires exit out the rear of the fryer near the rear oil return manifold (see Figure 7).



Figure 1

In This Kit		
Part #	Description	Qty
8072038	18" HEATER TAPE	1
8072039	36" HEATER TAPE	2
8072051	50" HEATER TAPE	1
n/a	WIRES	2
8074154	WAGO SNAP CONNECTOR	2
8140015	TY WRAPS	4
8110746	TAPE ALUMINUM	0.200
8198002	INSTRUCTIONS	1



Figure 2

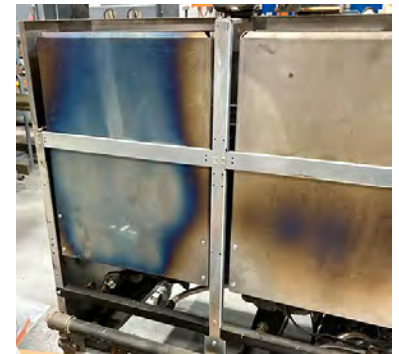


Figure 3



Figure 4



Figure 5

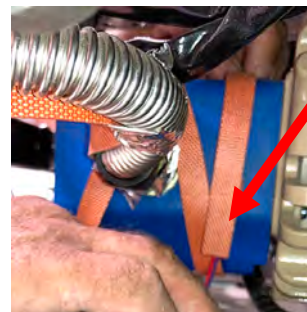


Figure 6



Figure 7

10. Using another 36-inch heater tape, lay the end opposite the wires starting at the front of the fryer, attach to the elbow behind the filter pan pickup tube. Secure using aluminum tape. Route along the flexline towards the rear of the fryer (see Figure 8).

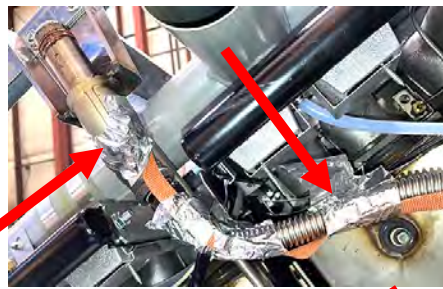


Figure 8

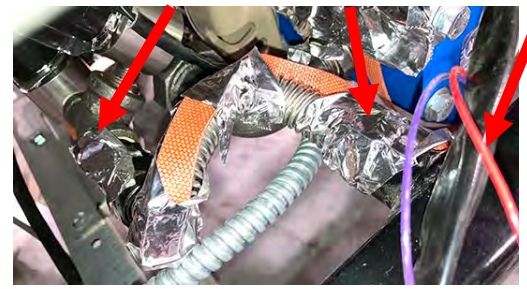


Figure 9

11. Route under the vent solenoid and "T" to the rear oil manifold (see Figure 9). Ensure the purple and red wires exit the rear of the fryer near the oil return manifold.



Figure 10



Figure 11

12. Using an 18-inch heater tape, attach the end opposite the wires where the plumbing "T"s off of the line in the previous step, and wrap around the line with the other vent solenoid, towards the pump inlet (see Figure 10). Secure using aluminum tape. Ensure the purple and red wires exit the rear of the fryer near the oil return manifold.

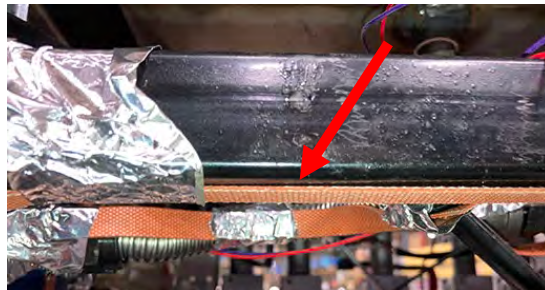


Figure 12



Figure 13

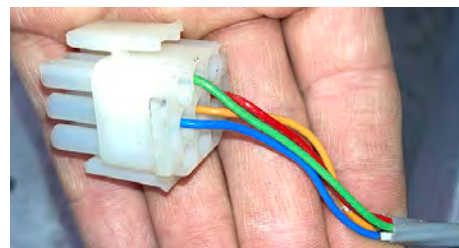


Figure 14

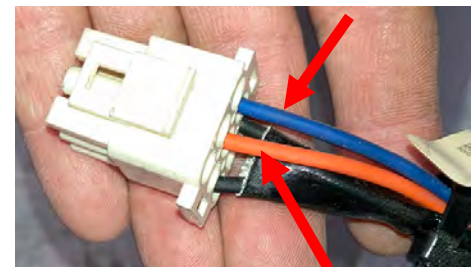


Figure 15

13. Using the 50-inch heater tape, start at far-left return valve and attach the end **WITH** the wires and route along flex line, to the oil return manifold (see Figure 11). Secure using aluminum tape. Route under return manifold (see Figure 12) to far-right return line (see Figure 13). Ensure the purple and red wires exit the rear of the fryer near the oil return manifold.

14. **ENSURE ALL HEATER TAPES ARE COMPLETELY WRAPPED IN FOIL TAPE.**

15. Locate the 9-pin main harness with gray cable connected to the transformer box (see Figure 14). **DO NOT DISCONNECT THIS CONNECTOR!**

16. Locate the 9-pin harness with the orange and blue wires connected to the transformer box (see Figure 15). Disconnect this connector from the transformer box.

17. Insert the **BLACK** wire into pin 1 and the **WHITE** wire into pin 3 position of the connector in the previous step (see Figure 16). **Note: Pin 1 is identified with the ridge on the side of the connector.**

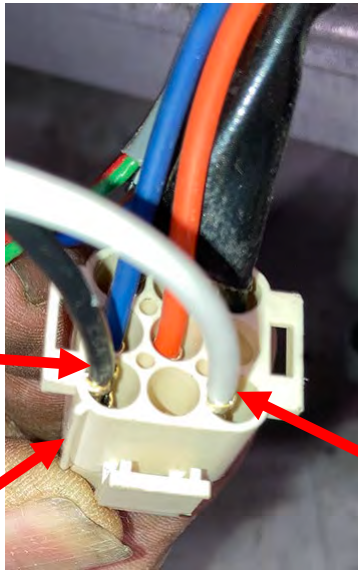


Figure 16

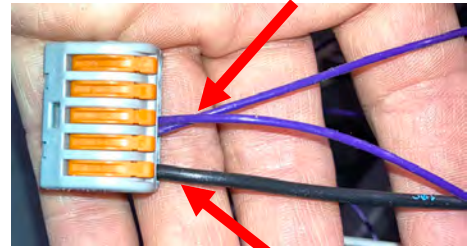


Figure 17

18. Using a Wago snap connector, lift up the tabs and insert the other end of the **BLACK** wire in Pin 1 into the Wago and the **PURPLE** wires from the heater tapes (see Figure 17). Close the snap connector and tug on wires to ensure the wires are secure. There should be a total of four (4) purple wires in the connector. **(See using Wago Connectors below)**



Figure 18

19. Using a Wago snap connector, lift up the tabs and insert the other end of the **WHITE** wire in Pin 3 into the Wago and the **RED** wires from the heater tapes (see Figure 18). Close the snap connector and tug on wires to ensure the wires are secure. There should be a total of four (4) red wires in the connector.
20. Reconnect the plug to transformer box.
21. Tuck and tie up the wires and Wago snap connector out of the way and out of the filter pan's path.
22. Reverse steps 1 through 5 to return fryer to service.
23. Test the function of the solid shortening heater strips to ensure function.

Using Wago Snap Connectors

Wago connectors allow stripped wires (3mm) to be cleanly connected. They are easy to use:

1. Completely lift the orange lever. It will stay upright.
2. Insert stripped wires.
3. Close orange levers.
4. Gently pull on the wires to ensure the wires are secured.
5. Ensure no bare wire is visible outside the connector.

